



Pandemic Guidelines 2020

Welcome back to Crow Vineyard & Winery!

Come enjoy an hour outside at our farm vineyard and sip some award-winning wine.

Please review the guidelines below that are in place for the safety and health of you, our employees and our family.

BEFORE YOU ARRIVE:

Please remain home if you are sick, not feeling well or have reason to believe you have been exposed to the virus

- Call to make a 1 hour reservation in our outdoor seating areas, 12-5pm, last seating 4:00 pm (302.304.0551 | see map next page)
- 6 person max at this time, parties with pets or children will be seating in our picnic table area
- Prepayment of products will take place over the phone when you are making your reservation
- Consider what you will need to bring with you from home to Crow (i.e. masks, gloves, outdoor attire, etc.)

WHAT WE CAN OFFER:

- Limited tasting menu and featured wines by the glass
- Full selection of wines available by bottle
- Local Cheese & Summer Sausage Platter - \$17.00
- No outside food or alcohol permitted

When you call to reserve a seating, please ask a Crow employee about any specials taking place or food options

WHEN YOU ARRIVE:

- **With a mask on**, please head to the check-in desk, a Crow employee will greet you and show you to your table (see map)
- Please refrain from moving your table or chairs
- We are only permitted to have guests outside, please do not go into the Tasting Room, this area is for Pick-Up only
- Sanitizer stations will be set up in each seating area for your use, in addition to a handwashing station next to the winery
- Your table will be set with your prepurchased products (wine/s, glasses, snacks, to-go bags, etc.)
- Once you are seated you may remove your mask (pffeww!!! time to enjoy the wine!)
- Any time you leave your table you must be wearing a mask and remain 6ft away from all other guests or employees
- You may use the event restroom trailer, wearing a mask, a Crow employee will be sanitizing the restrooms throughout the day
- Employees will not be permitted to mingle with guests, they are there if you need assistance
- Try not to touch too many objects in the environment; after your reservation your area will be completely sanitized
- Please be considerate of your reservation time (arrival & departure) as we may have other members coming in after you
- All Crow employees will be wearing masks and gloves when handling food or product in addition to sanitizing regularly

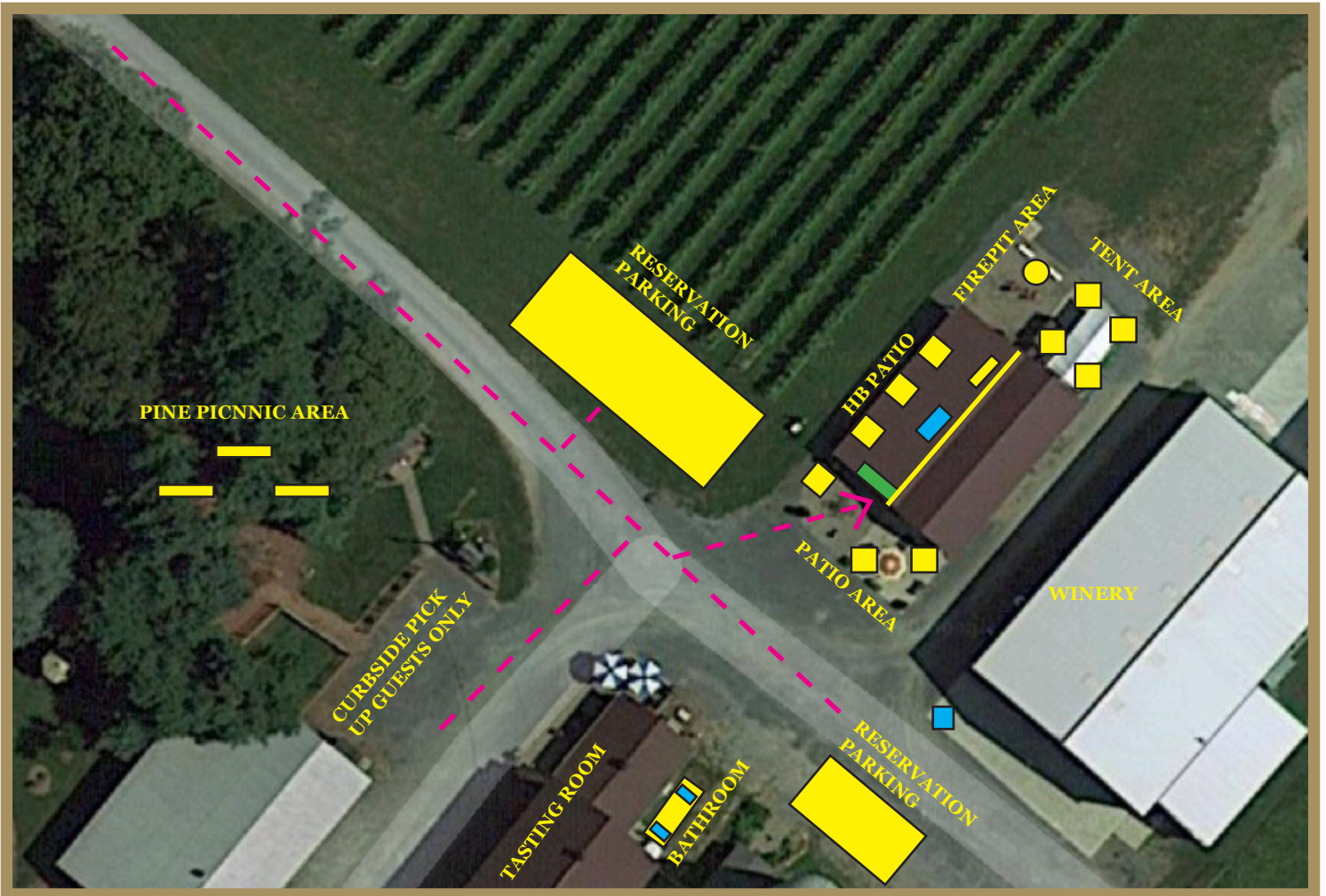
WHEN YOU LEAVE:

- When your reservation time is up or you are ready to leave, please gather all of your things and take them with you
- Anything you do not want to take you will need to throw away, we will have appropriate recycle bins out
- If you need to order more product, please head to the check-in station

To our loyal guests, we thank you for your patience and understanding at this time. We are adapting and want to ensure every person that comes onto Crow Farm is safe and feels safe while also doing their part to follow the guidelines set forth by the Governor, CDC and most importantly us. If we feel that any unsafe practices are taking place we reserve the right to ask you to end your reservations and promptly leave.

- The Crow Family & Staff

Please see seating chart on next page



RESERVATION AREAS

Pine Picnic Area - 2's & 4's - Tree Covered

Tent Area - 2's & 4's - Covered

Haybarn Patio - 2's & 4's - Covered

Patio Area - 2's & 4's - Uncovered

Firepit Area - 2's & 4's - Uncovered

TR - Tasting Room (Curbside Pick Up Guests Only)

- Check-In Desk/Order More Product
- Handwashing Station/Sanitizing Station
- - Driving/Parking